

Lakewood Tech EQ ELAC Meeting

*Comité avisador para estudiantes
aprendices del Inglés*

November, 7 2024



AGENDA

01

**WELCOME &
INTRODUCTIONS**
Bienvenida y
presentaciones

03

**Reclassification/
Reclasificación**

02

**Core Values/Our
promise Activity/LW
UPDATES**

04

**Anuncio de LW
Reclassification
Celebration/
Celebración de
reclasificación**



01

Welcome & Introductions

*Bienvenida y
presentaciones*

ELAC TEAM MEMBERS

Carly Sturm, PRINCIPAL

Gerson Sandoval, ASSISTANT PRINCIPAL

Ashley Jimenez, SOCIAL WORKER

Arturo Guevara, OUTREACH COORDINATOR

Karina Aguilar, DELAC PRESIDENT

PARENTS LIKE YOU! ¡Padres como ustedes!



Core Values/ Promise

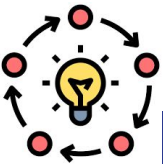
OUR PROMISE/ NUESTRA PROMESA

Every student is known by name, strength and need, ready to excel in high school and beyond, and to lead a life of joy and purpose.

Courage: *We create opportunities for positive change by boldly facing challenges as individuals to break down barriers, stretching our abilities, taking chances, trusting one another, and imagining new possibilities.*

Discuss and Create

1. Share your thoughts on the Core Values and Descriptors with the person next to you. Comparta sus pensamientos!
2. How will you see it a school/ Como lo mira en la escuela?



CONNECTOR / CONECTOR

OUR CORE VALUES



Joy

We cultivate a love of learning, a sense of purpose, and joy and fulfillment in our experiences.

Compassion

We care for one another and are considerate of each other's feelings, perspectives, and potential.

Justice

We believe in creating a world that is just, anti-racist, culturally responsive and inclusive. We act with integrity to take actions aligned with our knowledge and understanding of right and wrong, and our impact on the world.

Courage

We create opportunities for positive change by boldly facing challenges as individuals to break down barriers, stretching our abilities, taking chances, trusting one another, and imagining new possibilities.

Excellence

We hold high expectations of ourselves and others, strive for continuous improvement, and accept accountability for the outcomes we produce, individually and collectively.

02

Lakewood Updates

*Anuncio de
Lakewood*

Lakewood Updates

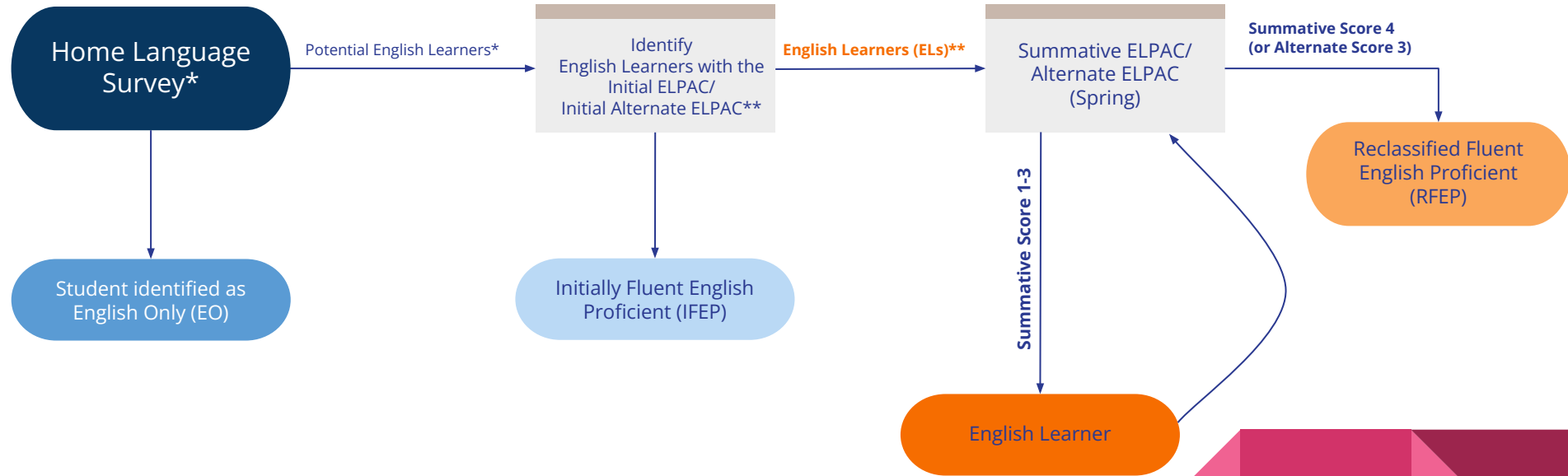
Anuncio de Lakewood

- Fire drill: 11/14/24
 - Report cards sent home: 11/15/24
 - Lion Pride Assembly: 11/22/24
 - Thanksgiving Recess: 11/25/24-11/29/24
 - Simulacro de incendio: 14/11/24
 - Boletas de calificaciones enviadas a casa: 15/11/24
 - Asamblea del Orgullo León: 22/11/24
 - Receso de Acción de Gracias: 25/11/24-29/11/24
- 

03

Reclassification/ Reclasificación

Identifying Potential English Learners (ELs)



*Any language other than English marked on the first three questions on the Home Language Survey prompts SSD to administer the initial ELPAC to the student to determine potential ELs.

**Scoring in the "Novice" or "Intermediate" range on the initial ELPAC designates the student as an English Learner.

CDE Reclassification Criteria



**Assessment
of language
proficiency**



**Teacher
evaluation**



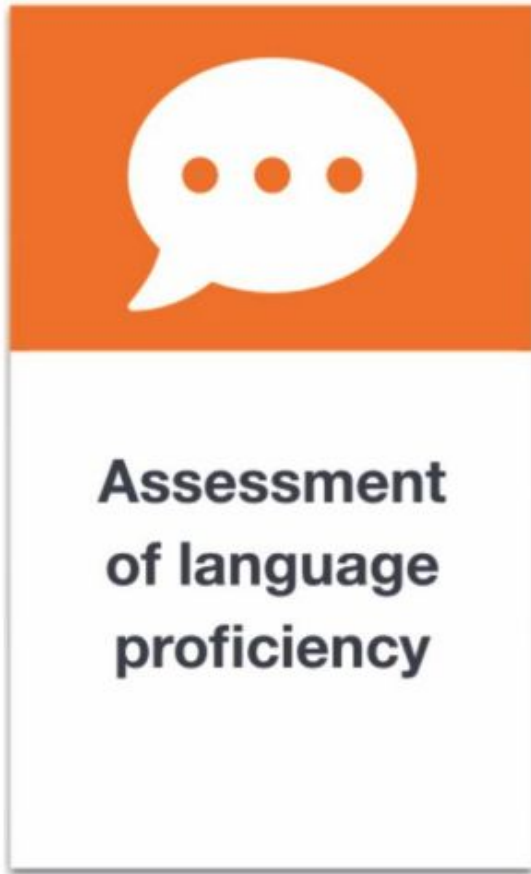
**Parent /
Guardian
opinion**



**Comparison of
performance
in basic skills**

Assessment of Language Proficiency

To reclassify, students need to achieve an overall **ELPAC score of 4** or **Alternate score of Level 3** on their Summative ELPAC assessment that is administered each year to all English Learners. This criteria is set by the state board of education.



Performance Areas

+ Oral Language

+ Written Language

Oral Language Performance Areas



Listening

Students can listen to a variety of scenarios, including conversations, presentations, and stories and answer questions about what they heard.



Speaking

Students can speak in English for a variety of purposes: to talk about an illustration or scene, support their opinion, retell a story and summarize an academic presentation.

Written Language Performance Areas



Reading

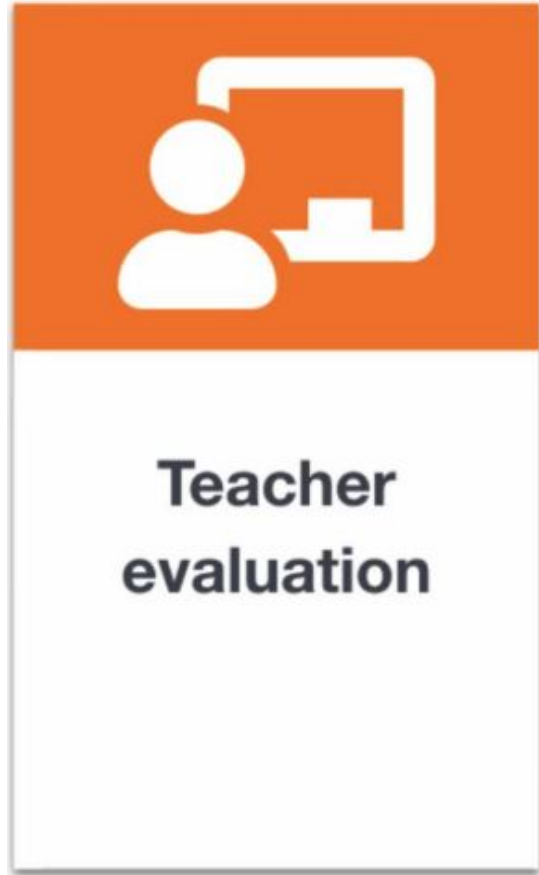
Students can read a variety of materials and answer questions about what they've read.



Writing

Students can write about a variety of topics for different purposes including giving their opinion, describing a picture, and writing about an experience or academic information.

Teacher Evaluation



Teacher evaluations, including, but not limited to, a review of the student's curriculum mastery

Sample evidence of academic performance

- Report card grades in English Language Arts
- Writing sample
- Teacher observations
- Formative assessments

Parent/Guardian opinion



**Parent /
Guardian
opinion**

Connect with families of English Learners to share student progress, discuss goals, and address possible concerns through consultation with parent/guardians.

This is a great opportunity to discuss how SSD will continue to monitor student progress for at least 4 years following reclassification.

Comparison of performance in basic skills



Comparison of the performance of the student in basic skills against an empirically established range of performance in based skills upon the performance of English proficient students of the same age, that demonstrates whether the student is sufficiently proficient in English to participate effectively in a curriculum designed for students of the same age whose native language is English.

Local Criterion

K-2: NWEA MAP Fluency Phonics and Listening Comprehension scores OR SANDI scores

3-8: NWEA MAP Growth Reading/California Assessment of Student Performance and Progress (CAASPP)/California Alternate Assessment (CAA) OR SANDI scores

Reclassification Procedures

Identify English Learners eligible for reclassification

Students who achieve a Summative 4 or Level 3 (Alternate) on the ELPAC are considered eligible for reclassification, pending local review of progress.

Teacher and school team review EL data

Apart from the Summative ELPAC score of 4 or Level 3 (Alternate), a school site team, including the classroom teacher, will review the English Learner's progress on local assessments, report cards, and in-class observations

Parent/Guardian Consultation

Once an English Learner has a Summative 4 or Level 3 (Alternate), and the school team has recommended the student for reclassification based on local criteria, parent/guardians are consulted for an opportunity to discuss progress and voice any questions about their student's reclassification.

Reclassification

An English Learner's "English Language Acquisition" status is changed from English Learner (EL) to Reclassified Fluent English Proficient (RFEP) in our local and state systems.

Monitoring

Students who have been reclassified (RFEP) must be monitored for at least four years, to ensure that (1) they have not been prematurely exited; and (2) they are meaningfully participating in the standard program of instruction comparable to English only peers.

NOV. 7, 2024

RED DE APOYO Y RECURSOS PARA FAMILIAS

TENGA UN ESPACIO
CONFIDENCIAL PARA HABLAR
CON NUESTRA TRABAJADORA
SOCIAL, MISS ASHLEY, PARA
APOYO EMOCIONAL Y
CONNEXION A RECURSOS
LEGALES, ALIMENTACIÓN,
ROPA, VIVIENDA Y OTRA
NECESIDADES BASICAS.



MISS ASHLEY
408-522-8272 EXT. 1750
PROGRAM ROOM 2 | 8:45 - 9:45
TODOS ESTAN BIENVENIDOS

LW SPSA Goals for English Learners

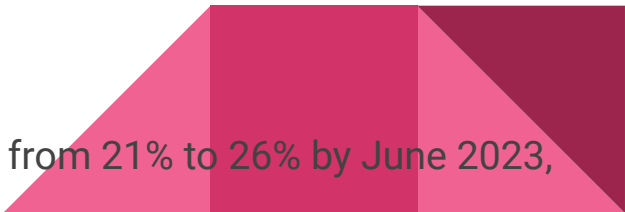
The percentage of EL students in kindergarten scoring proficient or above will increase from 20.5% to 25.5% as measured by the F&P BAS June 2023.

The percentage of EL students in first grade scoring proficient or above will increase from 39.5% to 44.5% as measured by the F&P BAS June 2023.

The percent of English Learners testing proficient in math based on the NWEA in grades 2-5 will increase from 22% to 27% by June 2023.

The percentage of English Learners testing proficient in English language arts based on the NWEA in grades 3-5 will increase from 22% to 27% by June 2023.

The percent of students reclassified as English Proficient will increase from 21% to 26% by June 2023, as measured by reclassification rates.





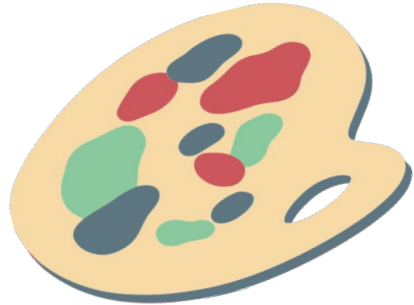
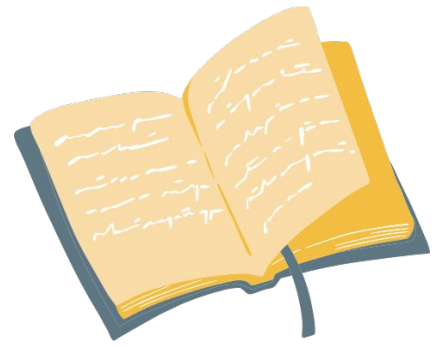
04

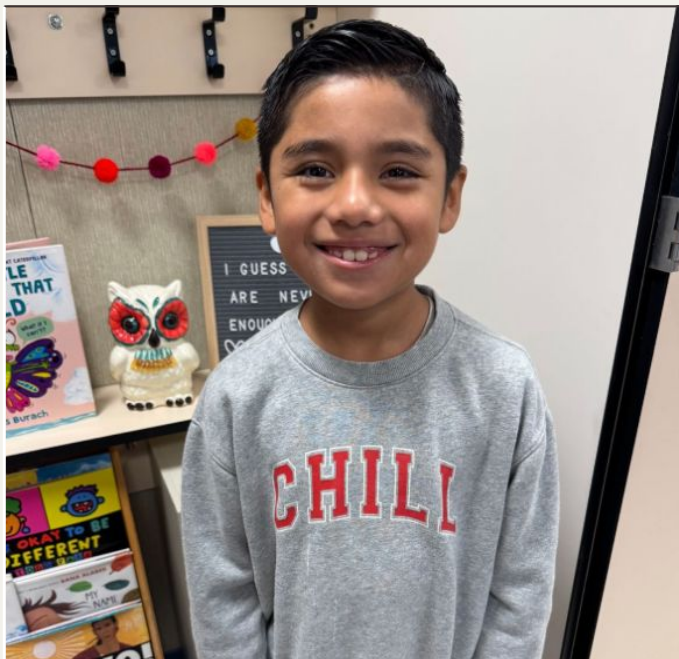
Reclassification Celebration/ Celebración de Reclasificación



Congratulations Graduates!

Lakewood Elementary School





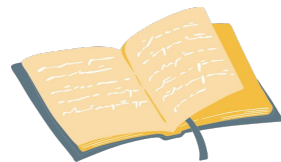
Matthew



Brandon

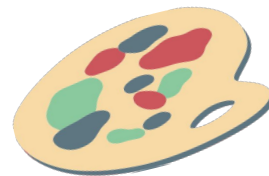
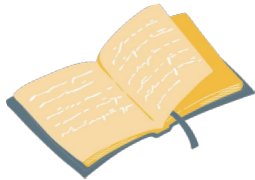


Allison



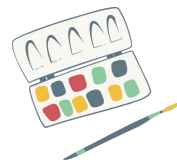


Allen





Samuel





Joel





Dayra





Nicolas



ELAC Meeting Dates for year?

¿Cuándo serán las reuniones de ELAC?

Meetings are
on the following:

- November 7
- January 10
- April 24

Las reuniones son
las siguientes:

- 7 de noviembre
- 10 de enero
- 24 de abril

DELAC Responsibilities / Responsabilidades

1. Advise the Sunnyvale School District Superintendent and the governing board regarding their District Master Plan for Services for English Learners.

2. Conduct on-going review of the district Master Plan and recommend modifications in the plan to reflect changing needs and priorities.

3. Have ongoing responsibility to review with district personnel the implementation of programs for English Learners and to monitor (through staff reports) the effectiveness of the programs.

1. Asesorar al Superintendente del Distrito Escolar de Sunnyvale y la junta de gobierno con respecto a su plan maestro para los servicios para los alumnos de aprendizaje de inglés.

2. Llevar a cabo una revisión continua del Plan Maestro del Distrito y recomendar modificaciones en el plan para reflejar los cambios en las necesidades y prioridades.

3. Tienen la responsabilidad permanente de revisar con el personal del distrito la implementación de los programas para los estudiantes de inglés y para controlar (a través de los informes del personal) la eficacia de los programas.



Other Topics

- Internet Safety
- Confidence and Self-Esteem
- Anger Management
- Homework Tips
- Mindfulness
- Bullying
- Anxiety
- Relationship Building
- Positive Discipline

- Seguridad en Internet
- Confianza y autoestima
- Control de la ira
- Consejos para el hogar
- Mindfulness
- Acoso escolar
- Ansiedad
- Construcción de relaciones
- Disciplina positiva